

# USER'S MANUAL

## K90PT



Home theater karaoke wireless microphone system

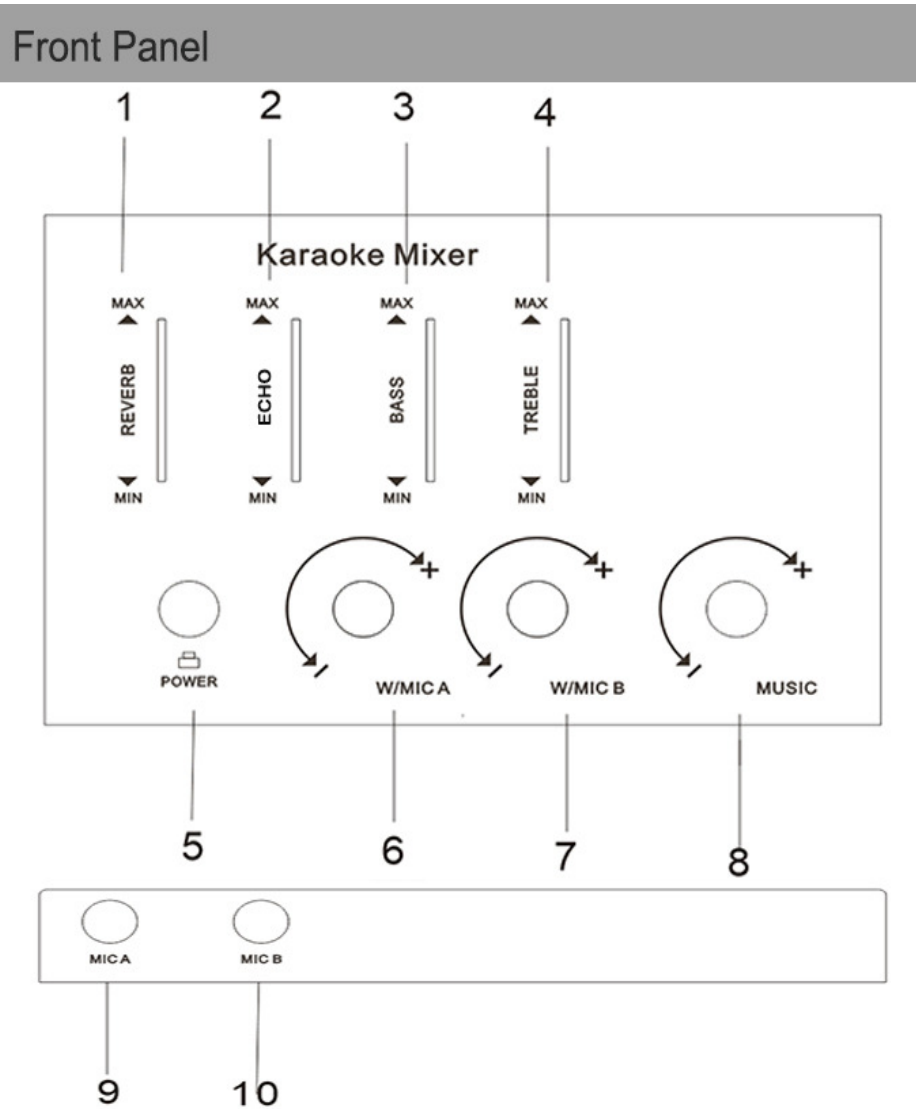


## FEATURES

- . The dual-channel home theater wireless microphone system comes with Ultra-High Frequency (UHF) and is interference free.
- . HDMI, Optical and 1/8" (3.5mm) input and output for instant Karaoke fun.
- . Compatible with an array of devices including TV, Smart TV, Blue-Ray player, notebook, iPad, tablet, home theater, receiver, speaker, etc.
- . The portable receiver and audio mixer supports up to two wireless microphones (included) and two wired microphones (not included).
- . Adjustable DSP sound effects Reverb, Echo, Bass, Treble and Vocal Cut Control for more Karaoke fun.
- . Easy to set up with up to 8 selectable frequencies and independent volume controls.
- . Up to 100 feet line-of-sight operation range. Perfect for Karaoke, DJ music and house party.

**Note: If you use HDMI sound out the microphone sound, is may be delayed, depending on your device.(we advice the TV only show picture ). Please use the receiver 3.5mm out to connect your amplifier/speaker.**

# Receiver



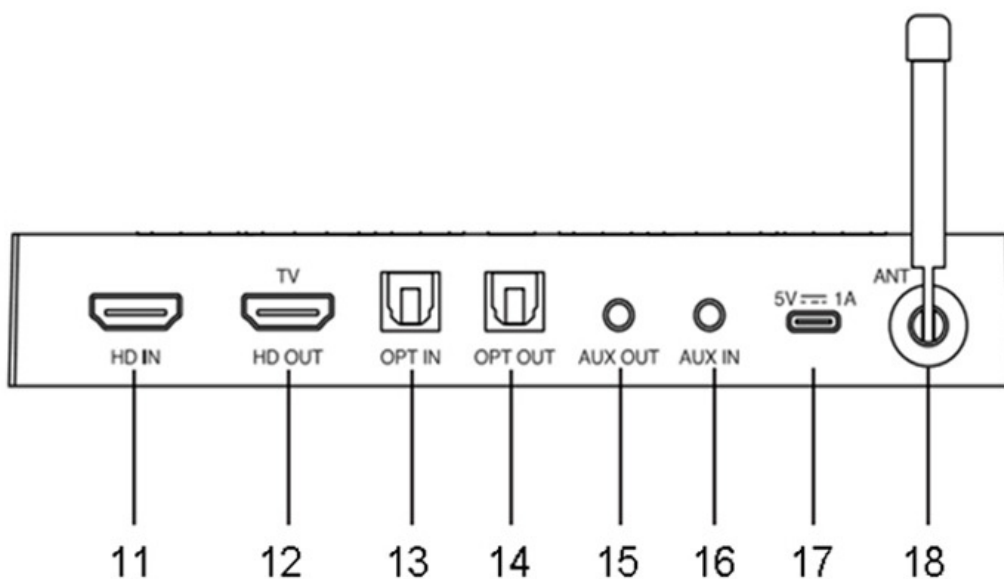
1. POWER / VOCAL CUT (#5): When the receiver is off, short press this button to power on the unit, and the MUSIC knob (#8) will light up blue.

When the receiver is turned on, short press this button will enter the 'vocal cut' mode, which will cut the vocal part of the incoming audio source while the music part will not be affected, and the MUSIC knob (#8) will light up purple when vocal cut is selected.

When the receiver is turned on, press and hold this button to turn off the unit.

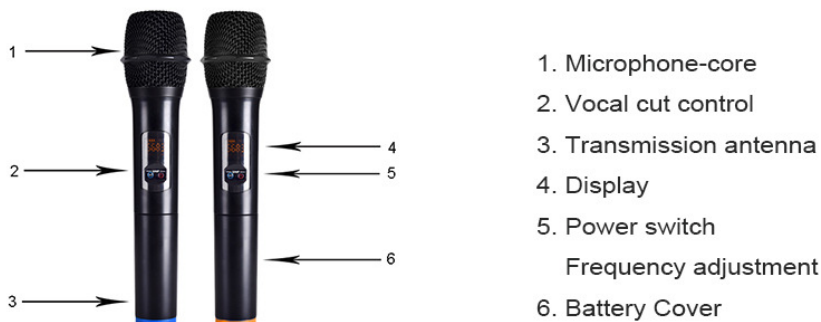
2. W/MIC A (#6): Rotate to adjust volume of wireless microphone A or the volume of the signal from 1/4" Jack input(#9), which can be a wired mic input or other instrument input.
3. W/MIC B (#7): Rotate to adjust volume of wireless microphone B or the volume of the signal from 1/4" Jack input (#10), which can be a wired mic input or other instrument input.
4. MUSIC (#8): Rotate to adjust volume of the music audio signal fed from other devices such as computer, iPad, TV, mobile phone etc., including signals from HD IN (#11), TV (#12), OPTICAL IN (#13) and 1/8" AUX IN (#16).
5. REVERB (#1): Slide this pusher to adjust the Reverb effect level.
6. ECHO (#2): Slide this pusher to adjust the Echo effect level.
7. BASS (#3): Slide this pusher to adjust the Bass effect level.
8. TREBLE (#4): Slide this pusher to adjust the Treble effect level.
9. MIC A/B (#9/10): Two 1/4" mono jack are provided for wired dynamic MIC inputs, and they can also support inputs for other music instruments such as electric guitars.

## Rear Panel



10. ANT (#18): Receiving antenna of wireless microphone.
11. AUX IN (#16): Connect this 1/8" TRS jack to an audio source with phone out such as computer, iPad, mobile phone etc.
12. AUX OUT (#15): Connect this 1/8" TRS jack to the INPUT of your amplifier or active speaker. (Mixed output for audio source and microphone signal.)
13. OPTICAL IN (#13): Connect this Optical input to an audio source with Optical output such as TV etc.
14. OPTICAL OUT (#14): Connect this Optical output to the INPUTS of your amplifier, soundbar or active speaker.
15. HD IN (#11): Connect this port to an audio source with HDMI output such as TV stick, TV box, Android box, PC etc.
16. HD OUT /TV (#12)
  - a: When the 'HD IN' has input, use this port to output the video signal to your TV, monitor or projector etc., then use the 1/8" 'AUX OUT' to output the audio signal to your amplifier, soundbar or active speaker etc.
  - b: When you need to connect your smart TV which comes with the HDMI ARC port (Audio Return Channel), connect to this 'TV' port and this port now used as an audio input, at this time you can output the mixed audio signal via AUX OUT or OPTICAL OUT to amplifier, home theater receiver, soundbar or active speaker etc.
17. DC IN (#17): Connect the provided AC/DC power adapter to this jack.

## Transmitter



## Operation

1. Connect the receiver to a power outlet through the power adapter provided and turn on the receiver.
2. Put two alkaline AA batteries into the battery compartment of the microphone. Please ensure the positive and negative ends are positioned in the correct direction.
3. Press and hold the power button Power on the microphone, In case of any frequency interference, press the power button again and the microphone will be turned to a different frequency. There are up to eight frequencies for you choose, Press and hold the power button again Power off the microphone.
4. Vocal cut Control, Press the SET key on the microphone will turn on or off the Vocal cut function, the receiver MUSIC knob (#8) will light up purple when it on and light blue when it off.
5. Please note that it will take a few seconds for the receiver to automatically syndicate the frequency with the microphone each time the power button is pressed.
6. To connect the receiver to a device such as a computer, TV, and speaker, etc., please refer to the connection diagram shown below.

## How to match the receiver

1. After 90 seconds of use in the power-on state, only the battery status and launch status will be displayed. While the frequency is not displayed, Touch the SET\POWER button to activate the display frequency and channel.
2. ID pairing, When the wireless microphone is turned off, press the SET and POWER button at the same time for 5 seconds, the ID key pairing status will be entered, and the antenna symbol will flash. Then turn the receiver power off and on within 3 seconds. When pairing on the receiver light will become blue. After 10 seconds, the pairing process will automatically exit, or press the SET button to exit the pairing process. (Note that if you press ID pairing and do not match the receiver, the wireless microphone wont work. Re-pairing can be used. CHA and CHB are independent ID).
3. Note: even you match ID. the same frequency cant use at same time. (you need choose different frequency)
4. When the battery symbol is flashing, replace the battery.

## Bluetooth connection

The receiver comes with built-in Bluetooth function and you can choose to pair the receiver with your Bluetooth device as well.

1. Once you power on the receiver, the receiver will become discoverable as "KARAOKE MIXER".
2. In the settings of your Bluetooth enabled devices, set it to 'discover'. From the Bluetooth device list. Select the "KARAOKE MIXER" device. When Bluetooth is used to connect a device (Say a Bluetooth enabled cellphone) Please connect the receiver via audio out port to the sound output device (say a speaker or sound bar) .

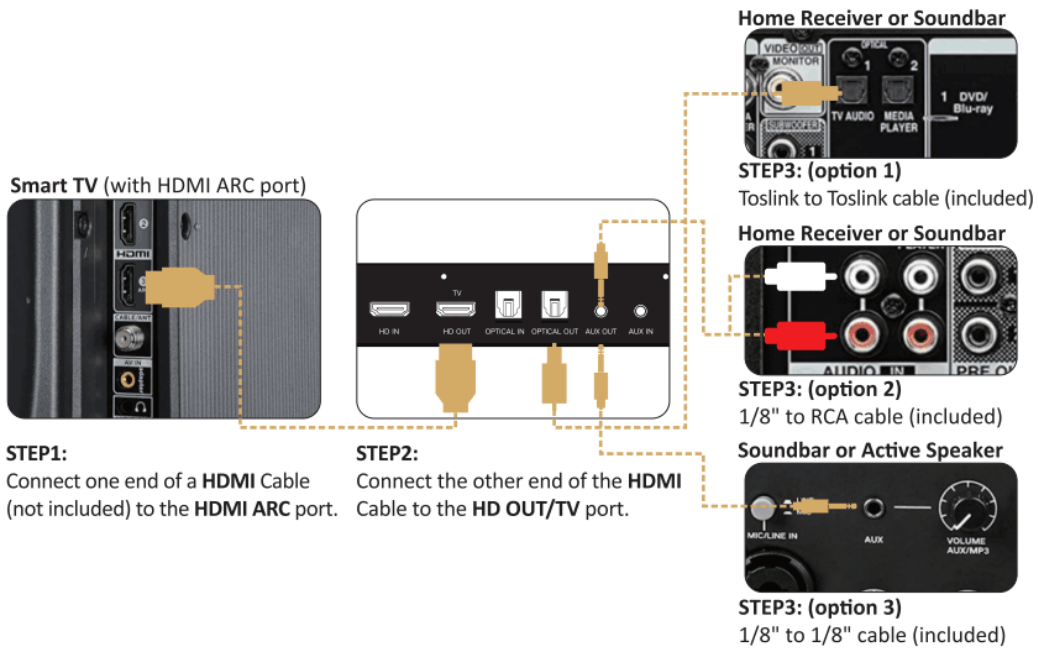
## Connection diagram





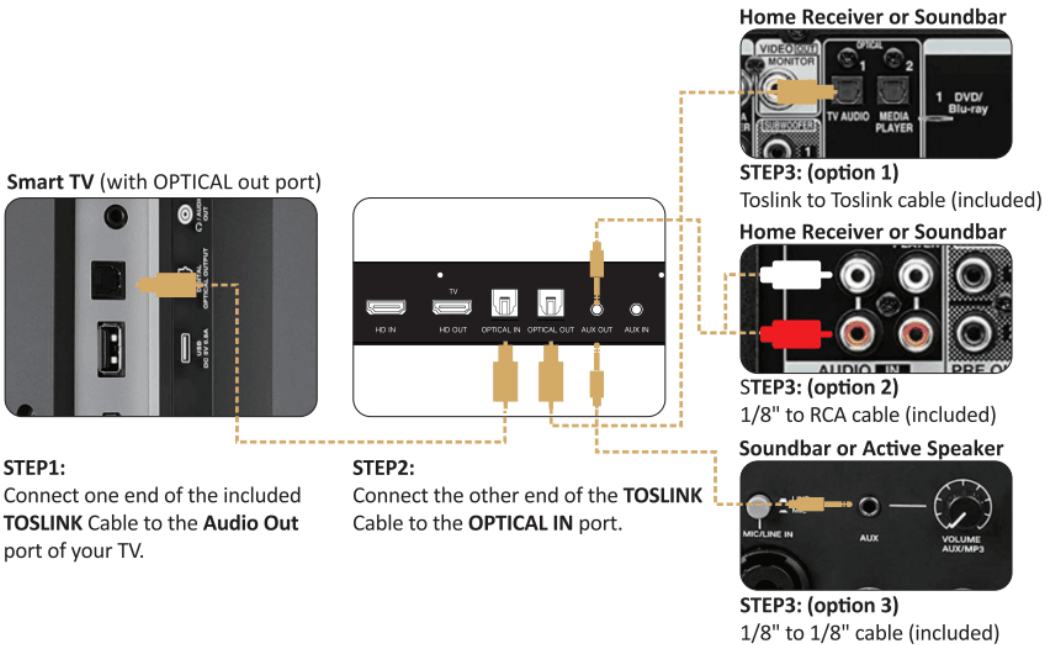
## 1. Connect with Smart TV (via HDMI ARC)

\* Please change the audio formats on your TV to 'PCM' mode first

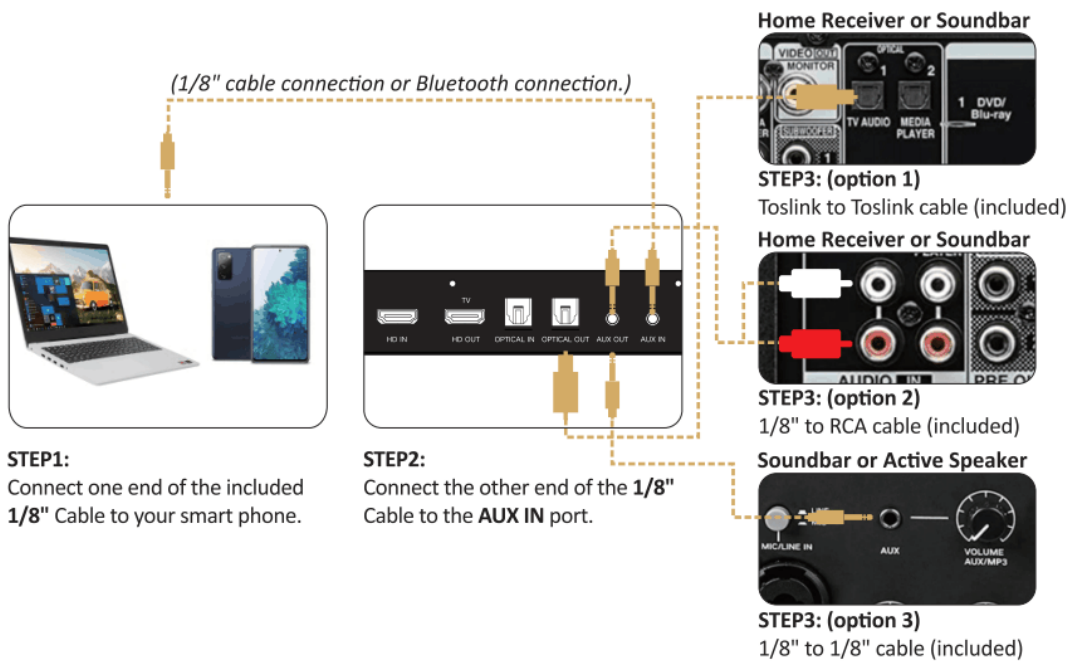


## 2. Connect source via Optical

\* Please change the audio formats on your TV to 'PCM' mode first



### 3. Connect source via 1/8" AUX IN or Bluetooth (Sound Mode)



### 4. Connect source via HD IN

